

## SKU : 133622

The KMT M series features a solid construction and is of high quality. These modern plate shears are equipped with a powerful drive motor, and a straight cutter angle ensures minimum workpiece torsion during cutting. The high-precision back gauge is positioned manually.

- Solid steel weldment with sliding block guide
- Cutters for stainless steel cutting are included
- Reversible cutters with multiple cutting surfaces
- Manual back gauge with travel display
- Work area secured by light curtain



## TECHNICAL SPECS

### WORKING AREA

Working length	2060 mm
Cutting angle	1.3 deg
Work table height	810 mm
Work table depth	390 mm
Number of support arms	2 positions
Support arms	450 mm
Strokes per minute	35 H/min

### MEASURES AND WEIGHTS

Overall dimensions (length x width x height)	2.65 m x 2.1 m x 1.26 m
Weight	1750 kg

### BACK GAUGE

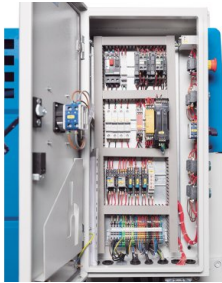
Rear stop	750 mm
-----------	--------

### CUTTING CAPACITIES

Plate thickness (min.) - 450 N/mm <sup>2</sup>	0.25 mm
Plate thickness (max.) - 450 N/mm <sup>2</sup>	3 mm
Plate thickness(max.) - 700 N/mm <sup>2</sup>	1.5 mm

### DRIVE CAPACITY

Motor rating main drive	4 kW
-------------------------	------



## PRODUCT DETAILS

### Machine Body and Drive System

- The machine frame is made of a very rigid, solid steel weldment and the cutter bar is sliding-block guided
- The high-precision guide ensures clean cuts and special cutters for machining stainless steel plates are included
- The upper cutters are reversible for use of both sides, and the lower cutters feature 4 cutting edges
- A rigid, continuous hold-down fixes the sheet metal plate right in front of the cut line

### Material Support

- The rigid side angle stop simplifies alignment of the plate to the cut line
- Rugged support arms ensure a strong hold of large plates
- A wide support table simplifies workpiece handling

### Ergonomic Design

- The bright LED illumination of the cut line creates a clearly visible shadow on the marked line
- Additionally, the smart machine enclosure design allows vertical view from the top for exact workpiece alignment
- An integrated cut counter keeps the user up to date
- All lubrication points and adjustment screws are easily accessible to simplify regular maintenance

### Rear stop:

- The back gauge is positioned manually via a hand wheel
- An analog linear scale makes exact positioning easy and reduces down-times
- The easy accessible work area at the back gauge is secured by light curtain

### Equipment

- The mobile foot switch gives the operator added flexibility and both hands are free for handling the workpiece
- High-quality electric components ensure reliable operation and maximum availability
- The full machine enclosure provides maximum safety, features a practical design and is precision machined

## STANDARD EQUIPMENT

750 mm manual controlled backgauge  
Cutting unit counter  
Cutting line lightning & shadow illumination  
Finger protection cages  
Rear safety covers with photocell  
Bottomblade with 2cutting sides+upper blade with 4cutting sides  
Foot switch with emergency stop switch  
Squaring arm with T slot, stoper and ruler  
Front sheet holding arms (solid rectangular type)  
Operator instructions