



Column Drilling Machines **ZXB50F**



SKU : 470556

TRIAL MACHINE

ZXB Series drill presses are the right choice for any workshop, from maintenance to finishing. These robust drill presses are equipped with a user-friendly control display. The spindle speed is infinitely variable, and the quill feed features a rugged manual transmission. The setup table can be positioned on Y axis and X axis and features motorized vertical movement. These drill presses are ideal tools for single parts and small batch production.

- Automatic feed with manual transmission
- Infinitely variable speed control
- Motorized table height adjustment
- Work table traverses on 2 axes and features a position indicator

TECHNICAL SPECS

WORKING AREA

Drilling capacity	1.97 in
Tapping capacity, steel	M 27
Table set up area	31 in x 11 in
Quill stroke	8 in
Powered table travel	19.69 in
Column diameter	6 in
Spindle nose-to-table surface distance	20 in
Spindle nose-to-foot distance	46 in
Throat	15 in
Travel X-axis	18 in
Travel Y-axis	11 in

MEASURES AND WEIGHTS

Overall dimensions (length x width x height)	50 in x 49 in x 96 in
Weight	1870 lbs

HEADSTOCK

Speed range	52 rpm - 2050 rpm
Spindle mount	MK 4
Swivel range	45 deg

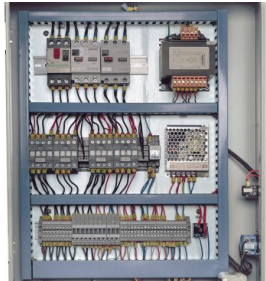
FEED

Quill feeds	0 in/R - 0.02 in/R
-------------	--------------------

DRIVE CAPACITY

Motor rating main drive	4 Hp
-------------------------	------

PRODUCT DETAILS



A rigid compound sliding table ensures precise positioning of hole patterns and drill patterns

Machine Frame

- Ideal for drilling, countersinking, reaming and tapping
- Very rigid construction with thick-walled column and large throat
- Base, column, table and gear head are made of premium high-quality cast iron
- The compound sliding table features a large setup area and allows high precision coordinate drilling
- Table guideways with taper gibs for precise positioning on X axis and Y axis
- Maximum positioning accuracy is made possible by a fully mounted 2-axis position indicator with linear scales
- Table height adjustment via a powerful motorized drive
- The auxiliary gears for the main spindle drive run in an oil bath for maximum reliability and minimum wear
- The automatic quill feed is controlled through an electromagnetic connection, without using power
- A hand-wheel is provided for micro-feed positioning
- The rugged LED work light with splash guard is bright, energy-efficient, and glare-free
- All machines in this series include a thread cutting function as standard equipment
- A central lubrication system delivers lubricant to the table guideways
- An integrated coolant system is included

Reliable operating concept

- The current speed is shown on a display, and all functions are arranged centrally on a robust keyboard
- An electromagnetic depth stop halts automatic feed with greater accuracy and no mechanical stress
- Measuring units for input and display can be selected by the operator (mm or inch)

2 axis position indicator

- More accuracy
- Lower error rate
- Increased productivity
- Resulting in valuable time savings
- For increased productivity
- Easy to read display
- Operator-specific features
- Convenient keyboard layout
- Default coordinates

Standard Equipment

- Thread cutter
- Compound Sliding Tables
- Protective shield
- LED work lights
- Coolant system
- Position Indicator
- Motorized table height adjustment

Sample product

- Only for markets outside the EU. Fully tested and fully functional machine, no warranty, but includes a 6-month warranty on replacement parts (wear parts excluded)
- For the EU market, we offer a wide portfolio of drill presses. Please visit our website for detailed information
- If you have questions regarding a product or sales limitations, please contact our sales experts