



SKU : 470597

TRIAL MACHINE

The SBF is ideally suited for a wide variety of applications. Its powerful drive and wide speed range make it an ideal drill press. But it also serves as milling machine for light cutting jobs in steel and non-ferrous metals. This makes the SBS 40 a drill press with additional usability for an unbeatable price.

- Infinitely variable feed on X axis
- Automated drilling feed with depth display
- Gearbox milling head for powerful machining
- Swiveling head for wide range of applications

TECHNICAL SPECS

WORKING AREA

Table set up area	730 mm x 210 mm
Number of table T-slots	3 positions
T-slot table (width x spacing)	14 mm x 50 mm
T-slot foot (qty)	2 positions
T-slot foot (width x spacing)	14 mm x 200 mm
Quill stroke	120 mm
Throat	272.5 mm
Column diameter	115 mm
Spindle nose-to-table surface distance	745 mm
Spindle nose-to-foot distance	1245 mm
Drilling capacity in steel	32 mm
Drilling capacity, cast iron	40 mm
Head swivel range	± 90°
Tapping capacity, steel	(ST 37) M16

TRAVELS

Travel X-axis	535 mm
Travel Y-axis	190 mm
Z1 / Z2 axis travel	950 mm

HEADSTOCK

Speed range	95 1/min - 3200 1/min
Spindle mount	MK 4 DIN 228

RAPID FEED

Rapid feed	500 mm/min
------------	------------

FEED

Work feed	0 mm/min - 350 mm/min
-----------	-----------------------

DRIVE CAPACITY

Main motor rating	1,3 / 1,8 kW
-------------------	--------------

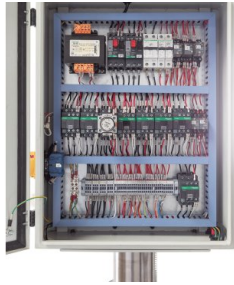
MEASURES AND WEIGHTS

Overall dimensions (length x width x height)	0.72 m x 0.74 m x 1.91 m
Weight	405 kg

PRODUCT DETAILS



Infinitely variable automatic feed on X axis



High-quality electric components



For drilling and milling



User-friendly control panel and digital depth indicator

Machine Frame

- The SBF is a compact, easy-to-use column drill press with compound sliding table that also can be used for light milling work
- The generously sized table, column, and cutter head are made of solid cast-iron
- The work table features manual vertical adjustment and swivels around the column
- Wide dovetail guides on X and Y axes ensure great stability
- The infinitely variable TV 1000 feed motor on the linear axis ensures a consistent and efficient milling operation
- A rapid feed simplifies machine setup and shortens downtime during machining

Cutter head

- The cutter head features manual vertical positioning and swivels to the left and right
- The milling machine's high-quality spindle bearing can withstand higher loads for the long term
- Tool mounts for milling tools are secured with a draw bar within the spindle
- The swiveling cutter head allows drilling and milling at various angles
- A two-step main spindle motor and the gears with oil bath lubrication provide a wide speed range
- High-quality electric components ensure reliable operation and maximum availability
- Integrated feed gears feature three gear steps for the automatic quill feed
- The high-precision quill micro-feed can also be operated via an auxiliary hand-wheel
- An adjustable stop gauge automatically stops the feed upon reaching the desired depth

Equipment

- The exact quill stroke is displayed on a digital depth indicator
- The machine features a tapping feature with automatic spindle reversal upon reaching the preset thread depth
- A coolant system is integrated in the machine foot

Sample product

- Only for markets outside the EU. Fully tested and fully functional machine, no warranty, but includes a 6-month warranty on replacement parts (wear parts excluded)
- For the EU market, we offer a wide portfolio of drill presses. Please visit our website for detailed information
- If you have questions regarding a product or sales limitations, please contact our sales experts

Standard Equipment

- Automatic quill feed
- TV 1000 table feed
- Drill chuck diameter 13 mm
- Tool-holder bits
- Coolant system
- Operator manual

KNUTH on YouTube Information to the point

On our YouTube channel you can find videos for nearly all machines from our program. We show the machines from current deliveries and you get an impression of the handling, the processing quality and the machining performance.

**Are you interested in a machine for which you cannot find a current video?
Please feel free to contact us!**

