

# Conventional Horizontal Lathes

## Turnado S 560 x 2000

**SKU : 470623**

### TRIAL MACHINE

The Turnado S series is a modern version of the classic universal lathe. It features a large work area, manually shifted spindle drive, and a feed system with rapid feed and feed stop. A wide selection of included standard equipment and many possible options make this machine very versatile and productive. A modern position indicator is included. The models in this series feature premium components and carefully machined surfaces.

- Classic design with rigid construction
- One-piece heavy-duty cast/iron bed for increased rigidity
- Rapid feed on X and Z axes
- Adjustable longitudinal stops for automated feed shut-off
- 3-axis position indicator



## TECHNICAL SPECS

### WORKING AREA

Center width	78.74 in
Center height	11 in
Turning diameter over bed	22 in
Turning diameter over support	13 in
Turning diameter over gap bridge	31 in
Gap bridge length	12 in
Bed width	16 in

### TRAVELS

Travel X-axis	14.8 in
Travel Z-axis	79 in
Travel Z1-axis	8 in
Swing range of top slide	± 90°

### HEADSTOCK

Speed range	15 rpm - 1500 rpm
Spindle bore	3.3 in
Spindle mount	ASA D1-8
Spindle taper	7 MT

### FEED

Feed X-axis	0.00079 in/R - 0.01575 in/R
Feed Z-axis	0.00197 in/R - 0.03228 in/R

### TOOL HEAD

Number of tool stations	4 positions
-------------------------	-------------

### THREADING

Threading, metric	0.5 mm - 14 mm
attributes.MEG-000005.MER-002736	2 TPI - 56 TPI

### TAILSTOCK

Tailstock quill diameter	3 in
Tailstock taper	5 MT
Tailstock quill stroke	6 in
Tailstock traverse adjustment	0.2 in

### DRIVE CAPACITY

Motor rating main drive	10.1 Hp
Motor rating feed	0.5 Hp
Motor rating coolant pump	0.1 Hp

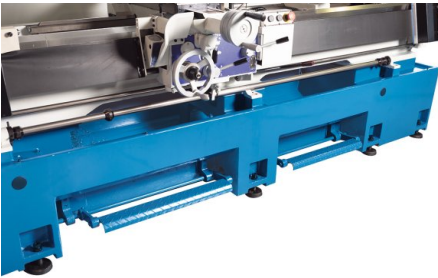
### MEASURES AND WEIGHTS

Overall dimensions (length x width x height)	137 in x 41 in x 50 in
Weight	6710 lbs

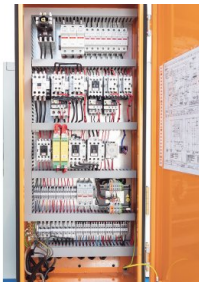
## PRODUCT DETAILS



*Large diameter steady rest included with standard equipment; illustration shows machine with optional equipment*



*Adjustable stop cams automatically shut off the feed*



- The robust design, long-term precision and intuitive operation have been proven in the production environment
- The heavy machine bed is made of premium Meehanite cast-iron and features wide, ground and hardened dual v-guides
- The heavy one-piece base ensures maximum rigidity and minimum vibration
- For machining of short parts with large diameters, one bed gap can be removed
- The large spindle capacity allows short clamping of long workpieces through the lathe chuck
- The 12-step main spindle gears run in an enclosed oil bath and provide high torque across the entire speed range for powerful chip removal
- All gears and shafts are hardened and ground
- A precision bearing (FAG or SKF) ensures superior concentricity at deep machining depth (0.000118" - 7.87")
- The top slide swivels and includes a 4-station tool changer system
- Guides on Z axis and Y axis for precise adjustments and smooth operation
- Feed gears and apron are lubricated in an oil bath
- The automatic feed stop system provides 4 switchable positions simplifies machining operations in series productions
- The rapid feed on X and Z axes reduces down times and simplifies operation
- The tailstock easily adjusts for taper turning via a side-mounted control
- The user-friendly control panel features ergonomically placed selector levers for easy operation and operator safety
- The chuck guard is equipped with a heavy-duty swivel mechanism and an electric monitoring system
- A swiveling guard can be mounted at the support to contain chips and coolant splatter
- Lead screw and feed shaft are protected by a reliable cover
- Robust and bright LED lighting technology is integrated in the splatter guard
- Position indicator with glass scales on all axes, fully assembled and provided with covers
- Extensive functions of the position indicator include a wide variety of easy to program additional functions
- All machines include a powerful coolant system

### Standard Equipment

- Rapid feed
- 3-axis Posi GF 800
- Chuck flange, 10.8"
- Shaft guides
- Thread gauge
- Fixed dead centers
- Steady rest
- Follow Rest
- Reducing sleeve for main spindle
- Change Gears
- 4-station tool holder
- Splatter guard
- Support protective cover
- Chuck protector
- LED Work Lamps
- Operating tools
- Operator manual